

izervay[™]
(avacincaptad pegol
intravitreal solution) 2 mg



If your dry AMD has progressed to geographic atrophy (GA), don't delay

SLOW GA
with **IZERVAY**



Listen to an audio version of this brochure. Call: 1-855-IZERVAY (1-855-493-7829)

INDICATION AND IMPORTANT SAFETY INFORMATION

What is IZERVAY[™]?

IZERVAY (avacincaptad pegol intravitreal solution) is a prescription eye injection, used to treat geographic atrophy (GA), the advanced form of dry age-related macular degeneration (AMD).

What is the most important information I should know about IZERVAY?

Do NOT receive IZERVAY if you:

- Have an infection in or around your eye
- Have active swelling in or around your eye that may include pain and redness

Please see Important Safety Information throughout this brochure.

[Click here](#) for full Prescribing Information.

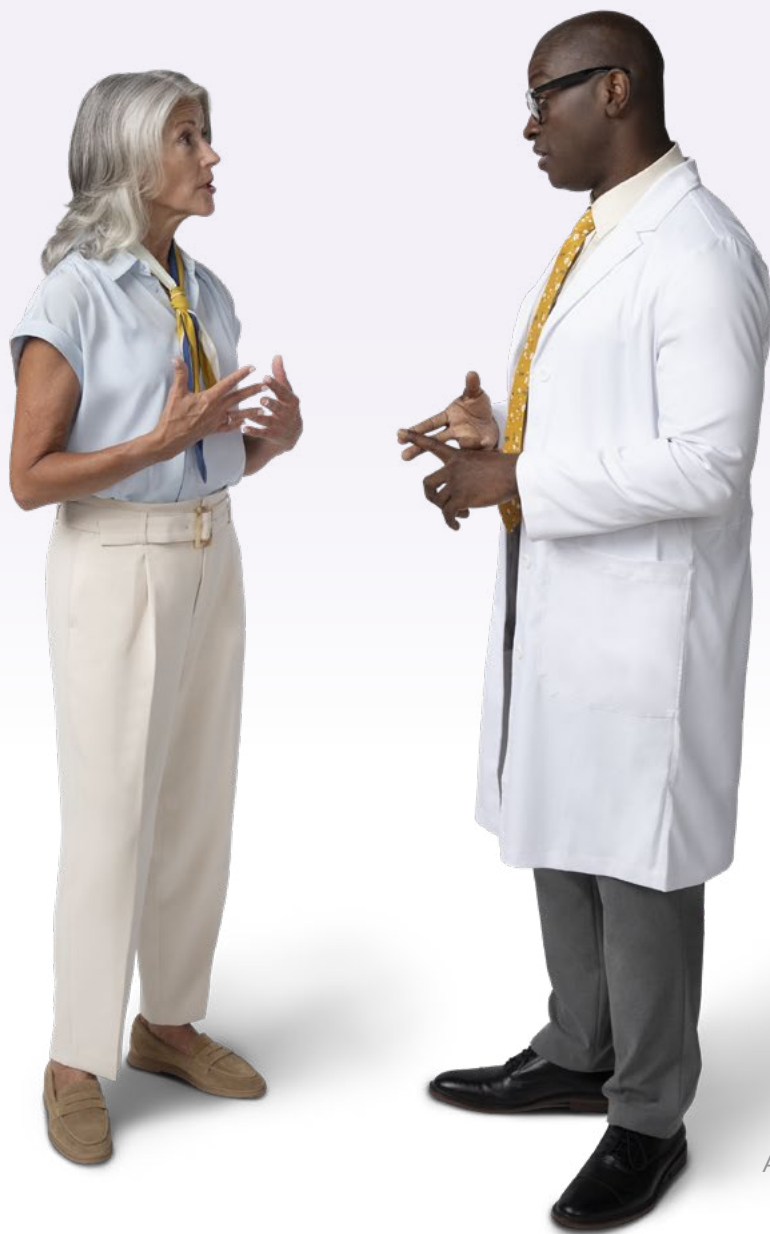


IMPORTANT SAFETY INFORMATION (CONT'D)

IZERVAY can cause serious side effects:

- Eye injections like the one for IZERVAY can cause an eye infection (endophthalmitis) or separation of layers of the retina (retinal detachment).
- Call your healthcare provider right away if you have redness of the eye, eye pain, increased discomfort, worsening eye redness, blurred or decreased vision, an increased number of small specks floating in your vision, flashes of light, or increased sensitivity to light.

YOUR TREATMENT JOURNEY STARTS HERE



Actor portrayal

Living with GA may present challenges, especially with changing vision. IZERVAY is an FDA-approved medicine proven to slow the progression of GA. Slowing GA progression may help preserve vision longer.

As you begin your treatment journey with IZERVAY, pay attention to your vision. Surround yourself with a support network that can encourage you and help you logistically. Team up with a retina specialist to stay one step ahead of GA.

Preserving your vision longer
can start today with IZERVAY

Please see Important Safety Information throughout this brochure.
[Click here](#) for full Prescribing Information.

izervay[™]
(avacincaptad pegol
intravitreal solution) 2 mg



Actor portrayal

YOU ARE NOT ALONE

There are about 1.5 million people in the US living with GA

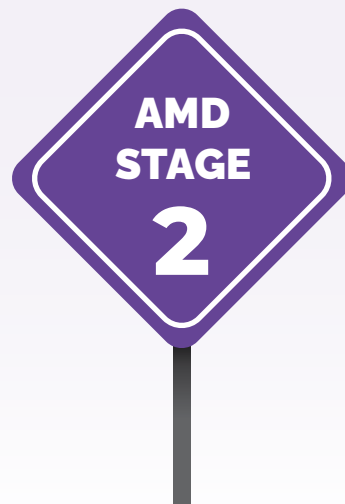
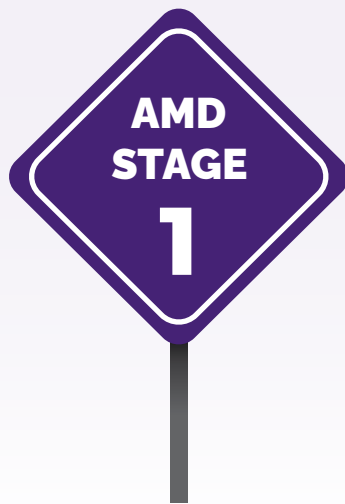
IMPORTANT SAFETY INFORMATION (CONT'D)

IZERVAY can cause serious side effects: (cont'd)

- There is a risk of developing wet AMD with IZERVAY. You should report any symptoms (visual distortions such as straight lines seeming bent, deterioration in vision, dark spots, loss of central vision) to your healthcare provider to monitor.
- IZERVAY may cause a temporary increase in eye pressure after the injection. Your healthcare provider will monitor this after each injection.

GA IS AN **ADVANCED FORM OF DRY AMD**

Age-related macular degeneration (AMD) is a progressive disease that happens in 3 stages



EARLY

Small waste deposits, called drusen, form in the back of the eye. People with early AMD typically do not experience vision loss.

INTERMEDIATE

Deposits increase in number and/or size. They may cause some vision loss, but some people will not have obvious symptoms.

ADVANCED

In addition to drusen, vision loss can occur from excess fluid and blood (wet AMD) and/or death of retina cells (GA).

IZERVAY is a treatment for GA,
the advanced form of dry AMD

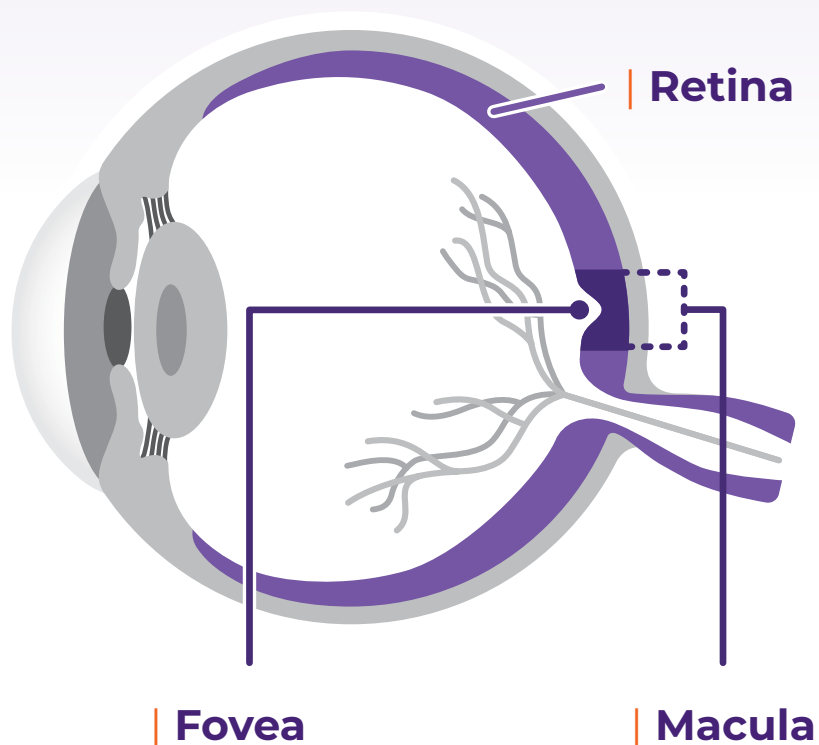
Please see Important Safety Information throughout this brochure.
[Click here](#) for full Prescribing Information.

izervay[™]
(avacincaptad pegol
intravitreal solution) 2 mg

GA IS A SERIOUS CONDITION THAT LEADS TO IRREVERSIBLE VISION LOSS

GA causes cells in your retina to die (atrophy), creating patches of dead cells (lesions) that cause vision loss

SIDE VIEW OF THE EYE



| Retina

Senses light and converts it into signals that your brain turns into images.

| Macula

The center of your retina that helps you see detail.

| Fovea

Responsible for your sharpest and clearest vision.

IMPORTANT SAFETY INFORMATION (CONT'D)

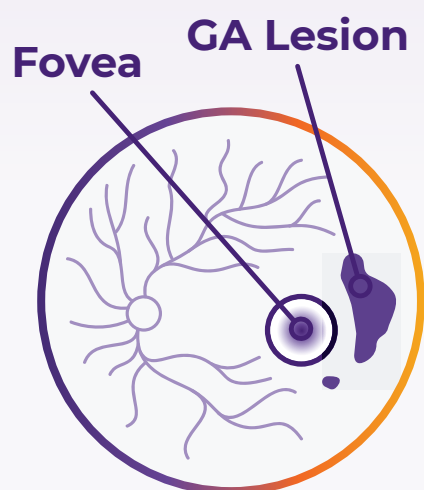
Before receiving IZERVAY tell your healthcare provider about all of your medical conditions including if you:

- Have a history of seeing flashes of light or small specks floating in your vision and if you have a sudden increase of size and number of these specks.
- Have high pressure in the eye or if you have glaucoma.

GA CAN PROGRESS UNPREDICTABLY AND FASTER THAN YOU THINK

In as few as 2.5 years, GA can spread to the fovea, where vision is sharpest and clearest*†

BACK VIEW OF THE EYE



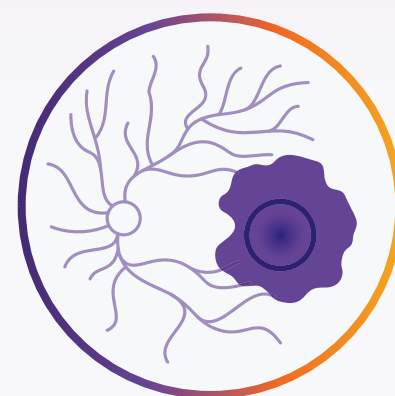
Early Onset

Lesions grow & retina cells die.



GA Progression†

Lesions grow larger and get closer to the fovea.



Severe Vision Loss

When lesions reach the fovea, it leads to severe vision loss.

Partner with a retina specialist‡ to monitor for changes in lesions and impact to your vision

*Median time since diagnosis in an analysis of 181 patients with GA.

†GA progression is different for everyone. Some people may experience slower or faster GA progression and changes in vision.

‡Retina specialists are medical doctors highly trained in treating conditions that affect the retina.

Please see Important Safety Information throughout this brochure.
[Click here](#) for full Prescribing Information.

izervay[™]
(avacincaptad pegol
intravitreal solution) 2 mg

RECOGNIZE THE SYMPTOMS ASSOCIATED WITH GA

If changes in your vision are impacting your everyday life, it may be a sign that your GA is progressing. Are you experiencing any of these symptoms?



Straight lines appearing wavy



Harder to see at night



Blank spots obscuring central vision



Words are blurry, and colors are washed out

Everyone experiences GA symptoms differently. Images are for illustrative purposes and should not be taken as medical advice. Talk to your doctor if you are experiencing any or multiple of these symptoms.

Even if your symptoms seem mild or you currently have no symptoms, **GA may still be progressing**

IMPORTANT SAFETY INFORMATION (CONT'D)

Before receiving IZERVAY tell your healthcare provider about all of your medical conditions including if you: (cont'd)

- Are pregnant or breastfeeding, think you may be pregnant, or are planning to have a baby, ask your doctor for advice before taking this medicine.
- Are taking any medications, including prescription and over-the-counter medicines, vitamins, and herbal supplements. Tell your healthcare provider about any medicine you take.

GA AFFECTS **EVERYONE DIFFERENTLY**

For many people, GA progresses quicker than expected and can begin to interfere with their routine and independence



67%

of people with GA in both eyes lost the ability to drive in 1.6 years*



50%

of people with GA lost 2 lines of vision on an eye chart within 2 years†

Early treatment can make a difference
in **slowing down GA progression**

*Analysis of EMR database in the United Kingdom, including 1901 patients with bilateral GA (GA in both eyes). 1.6 years represents the median (0.7-2.7 years).

†Analysis of 2062 patients with GA.

Please see Important Safety Information throughout this brochure.
[Click here](#) for full Prescribing Information.

izervay[™]
(avacincaptad pegol
intravitreal solution) 2 mg

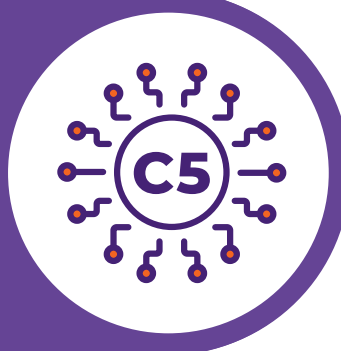
HOW DOES IZERVAY WORK?

IZERVAY slows GA progression by directly targeting C5, a key source of retinal cell death and loss of photoreceptors

In people with GA, a part of the immune system becomes **overactive**.



A protein called **C5** signals other proteins to start attacking retinal cells.



Only IZERVAY **blocks** the C5 protein to help protect healthy retinal cells and photoreceptors.



IMPORTANT SAFETY INFORMATION (CONT'D)

What should I avoid while receiving IZERVAY?

- Your vision may be impaired after receiving an eye injection or after an eye exam. Do not drive or use machinery until your vision has recovered sufficiently.

IZERVAY IS PROVEN TO SLOW GA PROGRESSION

Slowing GA progression may help to preserve vision longer

IZERVAY was proven to slow GA progression in 2 clinical trials evaluating 624 people with GA. In just one year, IZERVAY slowed GA progression by 18%-35% compared to those who were not treated.

Trial 1 (N=177)



Trial 2 (N=447)



Slower progression in just 1 year of treatment

IMPORTANT SAFETY INFORMATION (CONT'D)

What are the most common side effects of IZERVAY?

- Blood in the white of the eye
- Blurred vision
- Increase in eye pressure
- Wet age-related macular degeneration

These are not all the possible side effects of IZERVAY. Tell your healthcare provider about any side effect that bothers you or that does not go away.

Please see Important Safety Information throughout this brochure.

[Click here](#) for full Prescribing Information.

izervay[™]
(avacincaptad pegol
intravitreal solution) 2 mg

IZERVAY WAS EVALUATED IN 2 CLINICAL TRIALS

IZERVAY was well tolerated, with less than 2% of people stopping treatment due to side effects

Most common side effects at 12 months:	Treated with IZERVAY (n=292)	Not treated with IZERVAY (n=332)
Blood in the white of the eye	13%	9%
Increased eye pressure	9%	1%
Blurred vision*	8%	5%
Wet AMD	7%	4%
Eye pain	4%	3%
Spots in vision	2%	<1%
Eyelid inflammation	2%	<1%

*Blurred vision includes visual impairment and/or loss of sharpness or detail at a distance.

These are not all the possible side effects of IZERVAY. Talk to your doctor if you think you might be experiencing side effects.

IMPORTANT SAFETY INFORMATION (CONT'D)

Call your healthcare provider for medical advice about side effects. You are encouraged to report negative side effects of prescription drugs to the FDA. Visit www.fda.gov/medwatch, or call 1-800-FDA-1088.

STARTING TREATMENT WITH IZERVAY

IZERVAY is a monthly eye injection given in office by your doctor. Here is what you can expect:



Before

Your doctor will clean and numb your eye to help reduce discomfort.



During

The injection typically takes a few seconds. You may feel pressure in the eye, but, usually, little to no pain.



After

You may experience eye redness, blurry vision, or an increase in eye pressure.

It's important to follow your doctor's post-treatment care instructions and call them right away if you think you might be experiencing side effects.

Staying on treatment as recommended by your doctor is important to receive the full benefits of IZERVAY

Please see Important Safety Information throughout this brochure.
[Click here](#) for full Prescribing Information.


izervay™
(avacincaptad pegol
intravitreal solution) 2 mg



FINANCIAL ASSISTANCE PROGRAM

izervay *my way*SM
(avacincaptad pegol
intravitreal solution) 2 mg

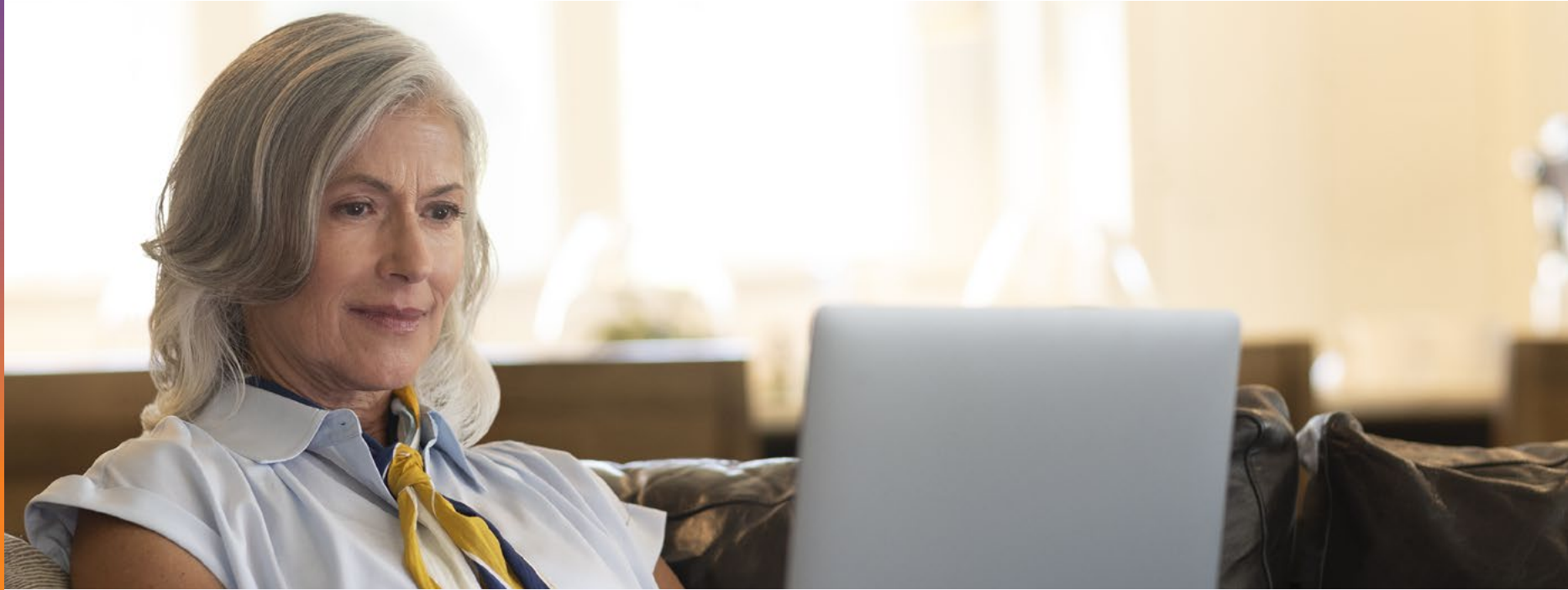
If you need help with the cost of
IZERVAY, the IZERVAY My WaySM
program may be able to help

Our patient support program is designed to meet the unique needs of eligible patients. Whether you have commercial insurance, insurance that doesn't cover IZERVAY, are uninsured, or have government-issued insurance (such as Medicare), help may be available.

Speak with your doctor to see if you are eligible for the IZERVAY financial assistance program or call 1-888-C5MYWAY (1-888-256-9929)



Please see Important Safety Information throughout this brochure.
[Click here](#) for full Prescribing Information.



CONNECT WITH OTHERS IN THE MD COMMUNITY



MacularDegeneration.net is an independent online health community for people living with macular degeneration (MD).

Visit [maculardegeneration.net](https://www.maculardegeneration.net)

Here are some advocacy groups for people with low vision



[brightfocus.org](https://www.brightfocus.org)



[preventblindness.org](https://www.preventblindness.org)



[fightingblindness.org](https://www.fightingblindness.org)



[lighthouseguild.org](https://www.lighthouseguild.org)

Astellas is not affiliated with and does not endorse any of the listed organizations. The information provided by Astellas is for informational purposes only and is not meant to replace the advice of a healthcare professional.



DON'T MISS YOUR OPPORTUNITY TO SLOW GA PROGRESSION

The earlier you act, the longer you may preserve your vision



Visit [**IZERVAY.com**](https://www.izervay.com)

IMPORTANT SAFETY INFORMATION (CONT'D)

**What is the most important information I should know about IZERVAY?
Do NOT receive IZERVAY if you:**

- Have an infection in or around your eye
- Have active swelling in or around your eye that may include pain and redness

This brochure is intended for US residents only.

**Please see Important Safety Information
throughout this brochure.
[Click here](#) for full Prescribing Information.**



Copyright © 2024 Astellas Pharma Inc. or its affiliates.
All trademarks are the property of their respective owners.
US-AP-2400205 09/24

izervay[™]
(avacincaptad pegol
intravitreal solution) 2 mg